

ESLAudit II

— Safe Access Control System —



System Configuration



User Management



Retrofits most mechanical
or electronic safe locks



Audit Trail

ESLAudit makes it easy to manage safe access with it's integrated USB Port.

SECURITY

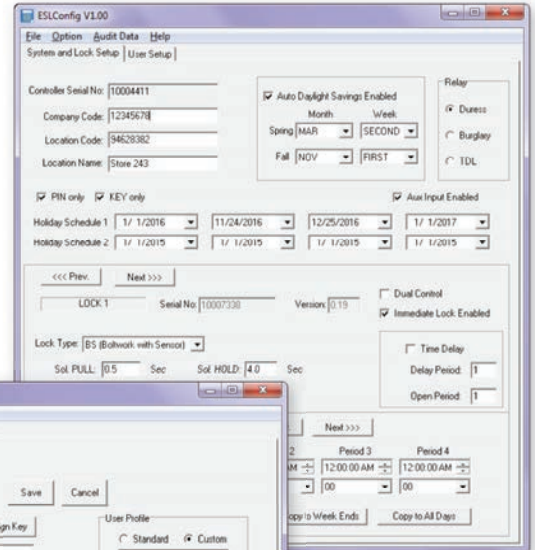
- All components communicate through an encrypted network
- Supports dual control and armored car pickups
- Supports time delay as a deterrent to robberies
- Supports time lock restricted access to defined operating hours
- Supports alarm output or duress alarm
- 5,000-record audit trail
- Supports up to 40 users, each of whom can have unique privileges
- PIN code and/or electronic keys for user authentication
- Optional door sensor detects if door is left open
- Back-up database secured inside of safe

FLEXIBILITY

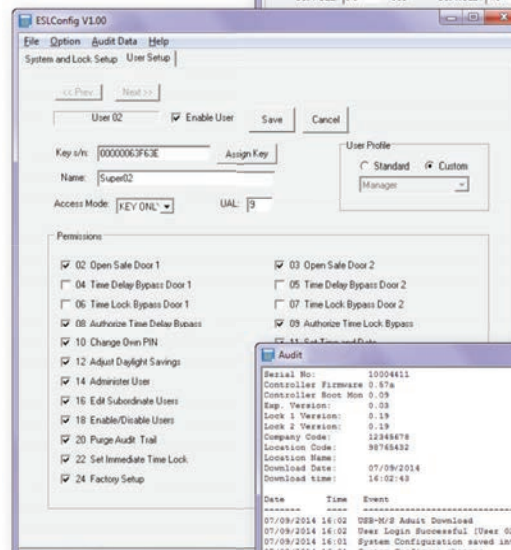
- Retrofits most mechanical or electronic locks
- 3 unique lock designs
- Controls up to 4 doors
- Safe doors can be configured in an inner/outer door configuration
- Authentication options: PIN and/or AMSEC e-Key
- 9-volt battery and optional AC power
- Optional remote time delay indicator
- Update firmware via USB port

POWERFUL PC APPLICATION

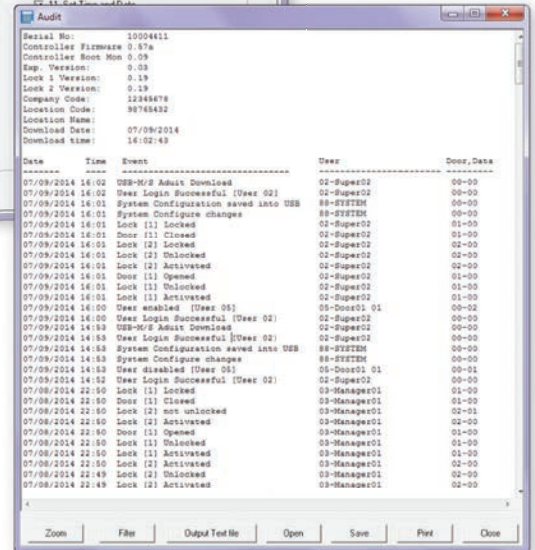
- Manage users
- View and store audit trails
- Manage system configuration
- Manage door settings



System Configuration

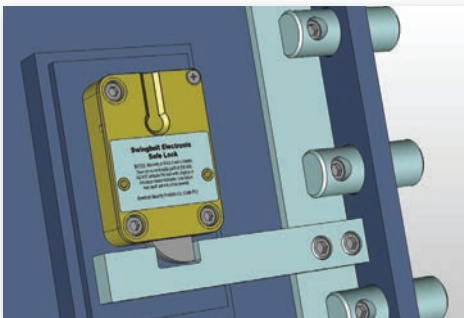


User Management

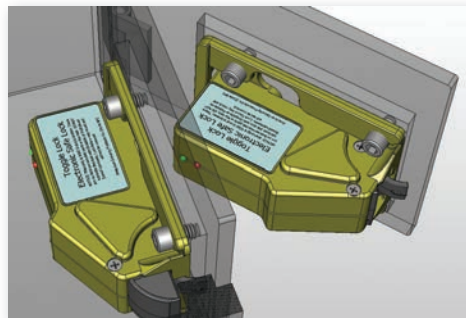


Audit Trail

Retrofits most mechanical or electronic locks



Swing Bolt Lock



Toggle Lock